

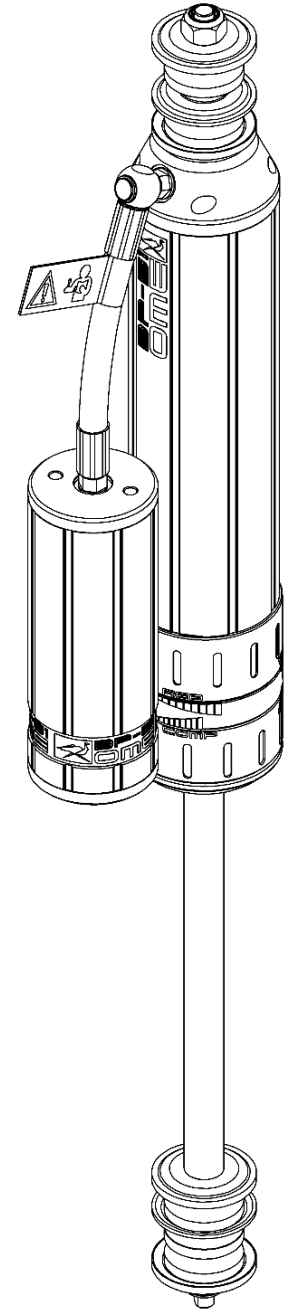
# FITTING INSTRUCTIONS

**BP5160012 & BP5160043** SUITS LC 80/105 SERIES FRONT  
**BP5160014 & BP5160044** SUITS LC 80/105 SERIES FRONT LONG

## WARNING

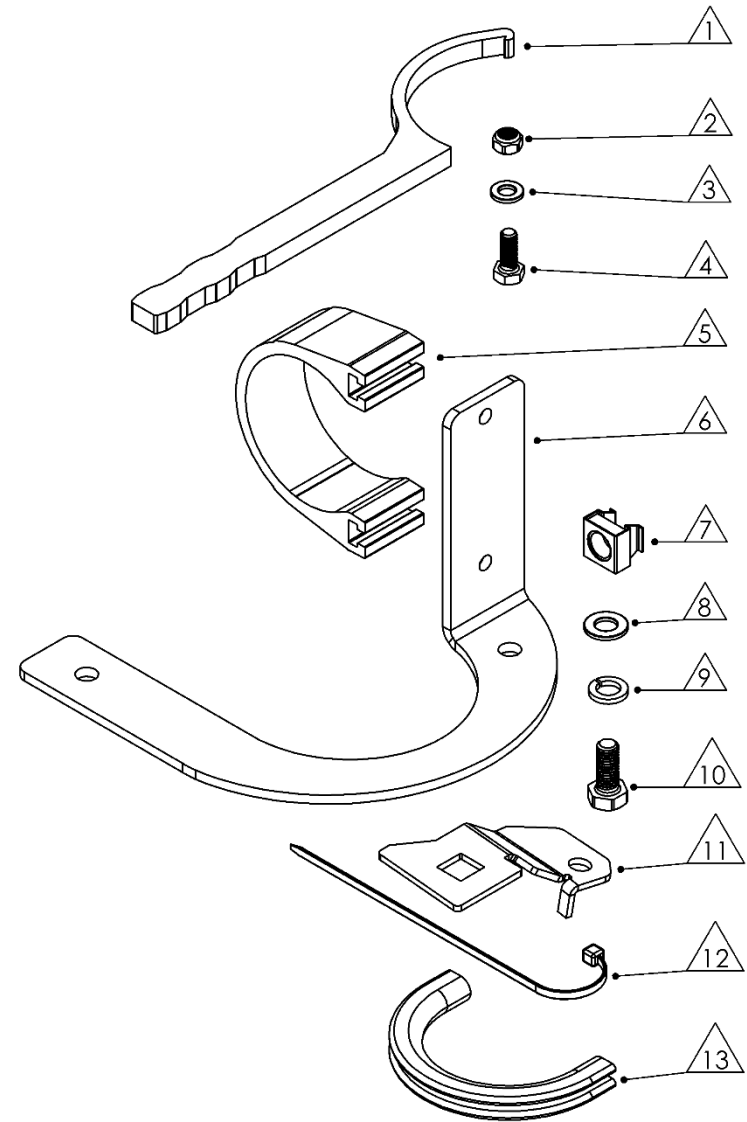
- ◆ This product must be installed exactly as per these instructions using only the hardware supplied.
- ◆ In the event of damage to any suspension component, contact your nearest authorised ARB stockist. Repairs or modifications to the suspension system components must not be attempted.
- ◆ Do not use this product for any vehicle make or model, other than those specified by ARB.
- ◆ Do not remove labels from suspension components.
- ◆ This product or its fixing must not be modified in any way.
- ◆ The installation of this product may require the use of specialized tools and/or techniques
- ◆ It is recommended that this product is only installed by trained personnel
- ◆ These instructions are correct as at the publication date. ARB Corporation Ltd. cannot be held responsible for the impact of any changes subsequently made by the vehicle manufacturer
- ◆ During installation, it is the duty of the installer to check correct operation/clearances of all components
- ◆ Work safely at all times

**Note:** These fitting instructions should be read in conjunction with the vehicle workshop manual.



## FITTING KIT CONTENTS – VM80010025

Item	Description	Qty	Spare Part No.
1	TOOL: ADJUSTER TOOL	1	VC10010071SP
2	FASTENER: NUT: M6 NYLOC	4	VD60010003SP
3	WASHER: M6 BLACK	4	VE70020005SP
4	FASTENER: BOLT: M6x 1.0x 16	4	VD60030003SP
5	MOUNT: RESERVOIR CLAMP	2	VE10010003SP
6	BRKT RESI: LC80/105 FRONT	1	VE10020030RSP
		1	VE10020030LSP
7	NUT CAGED M8 1.8-3.2	2	6151303Q8SP
8	WASHER: M8 BLACK	2	VE70020004SP
9	SPRING WASHER: M8 BLACK	2	4581047SP
10	FASTENER: BOLT: M8x 1.25x 20	2	VD60030001SP
		1	VF60050033RSP
11	BRKT LC80/105 FRONT BRAKE	1	VF60050033LSP
12	CABLE TIE NYLON 140 BLACK	2	6821178SP
13	PINCH WELD BBAR STAND	2	6191029SP



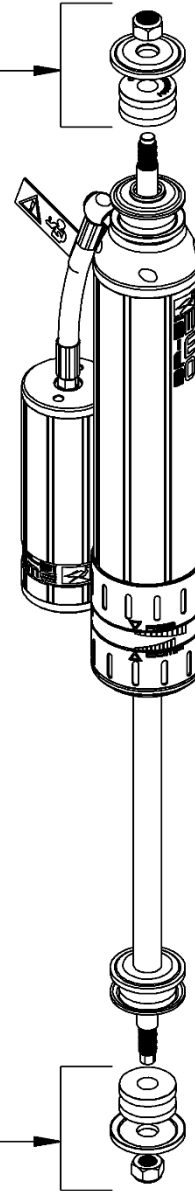
## MOUNTING SEQUENCE

The BP-51 needs to be fitted with the suspension in droop. Front sway bar and diff breather can be removed to gain more droop.

Mount the BP-51 dampers using the hardware in the sequence as shown.

Ensure all top and bottom mounting hardware is securely fastened.

**NEW** supplied in kit



### Top Mount

Fit the damper to the vehicle top mount first. Fit the bush, retaining washer and secure with the nut as shown by the diagram. The nyloc nut should be firmly secured against the retaining washer. Fit the top mount such that the hose leaving the damper is pointing towards the outside of the vehicle.

### Bottom Mount

Fit the bush and retaining washer and secure with the nut as shown by the diagram. The nyloc nut should be firmly secured against retaining washer.

## RESERVOIR MOUNTING SEQUENCE

Right and left fitting sequence are the same.  
(RH shown)

Remove wheel well splash apron from the body.

Fit M6 bolts to mounting bracket and secure with nyloc nut and flat washer. Secure finger tight only at this stage.

Remove nuts (1) securing spring center then fit reservoir mounting bracket and secure using the original hardware.

Fit the mounting saddle to the reservoir and slide over the heads of the bolts in the mounting bracket. Centralise the saddle on the bracket and adjust the position of the reservoir as shown.

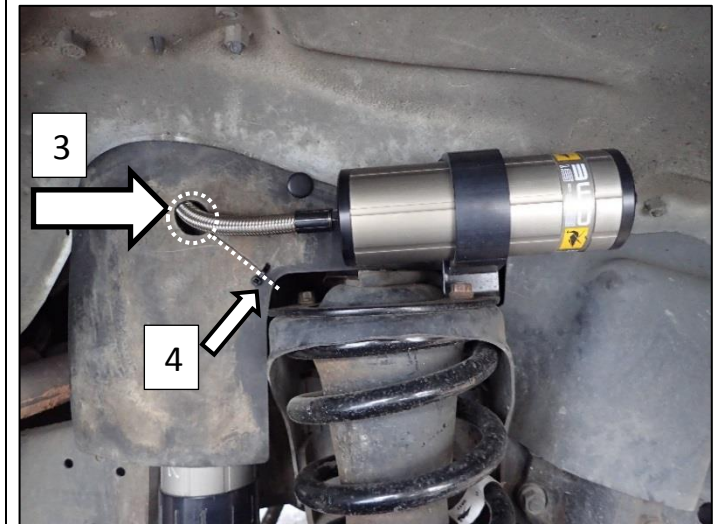
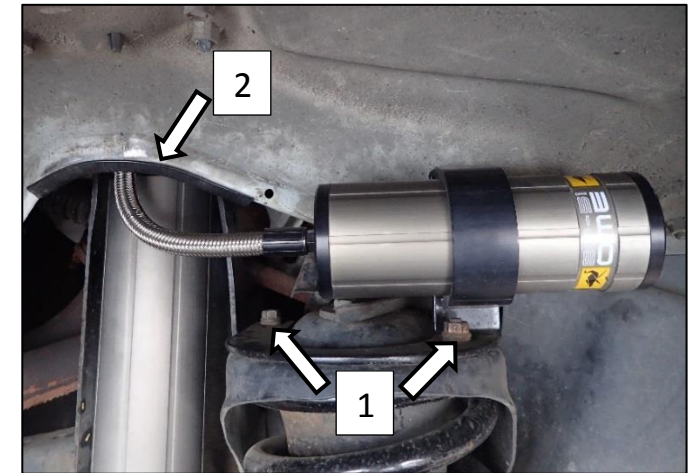
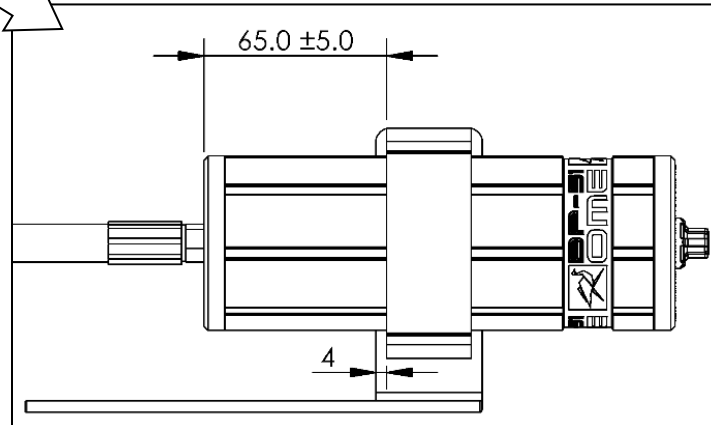
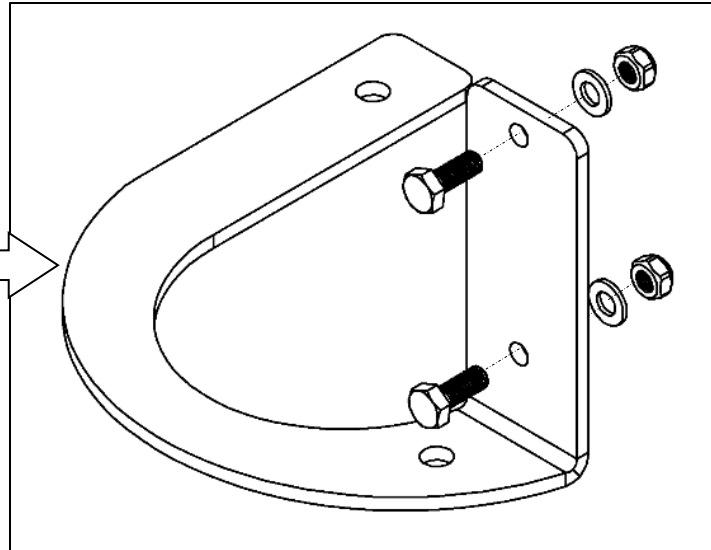
Ensure the reservoir clears the vehicle body and that the hose has a clean arc with no kinks.

Fasten hardware securely.

Fit the pinch weld to the vehicle body as shown in the picture (2).

### Optional

Trim the wheel well splash apron as shown (3) before refit it to the vehicle. Fit the apron. Secure with supplied cable tie as shown (4).



## BRAKE LINE EXTENSION BRACKET FITMENT

Right and left fitting sequence are the same.  
(RH shown)

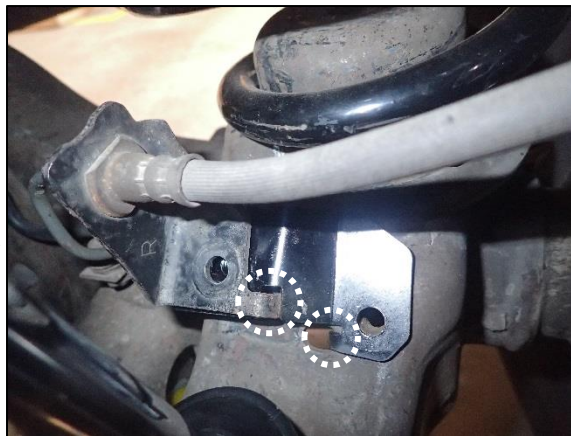
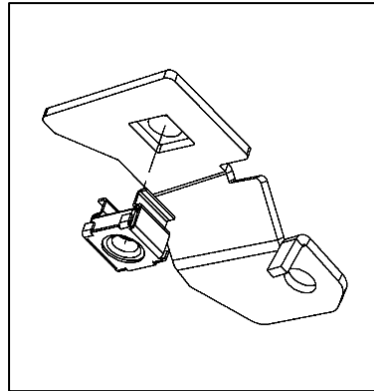
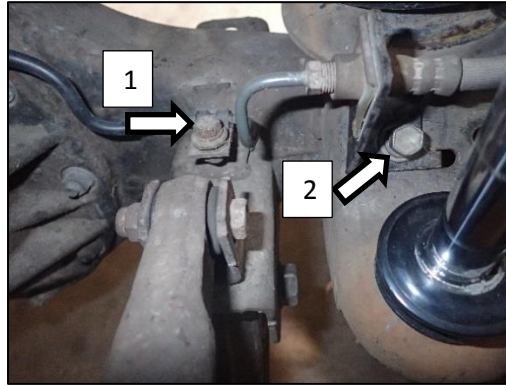
Brake line extension bracket is designed to create clearance and preventing collision around the bottom of the BP51 body at full compression.

**Step 1.** Loosen the hardware securing the brake line support bracket (1).

**Step 2.** Remove the hardware securing the brake line mount (2).

**Step 3.** Insert the M8 cage nut (6151303) to the brake line extension bracket (VF60050033) as shown.

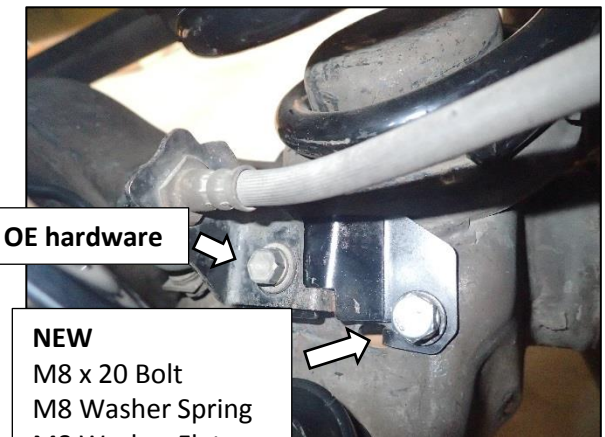
**Step 4.** Lift the brake line mount up and slide the brake line extension bracket (VF60050033) under it using the locating tab and slot as shown in the picture.



**Step 5.** For vehicles with an electronic diff lock, remove hardware shown in the picture then follow the previous step. Fit the diff lock wire bracket on the top of the new bracket.



**Step 6.** Fasten all hardware including the one that secures brake line support bracket. For vehicle with electronic diff locker fitted to it, reuse original hardware. Otherwise use the picture below as guide.



## DAMPING ADJUSTMENT

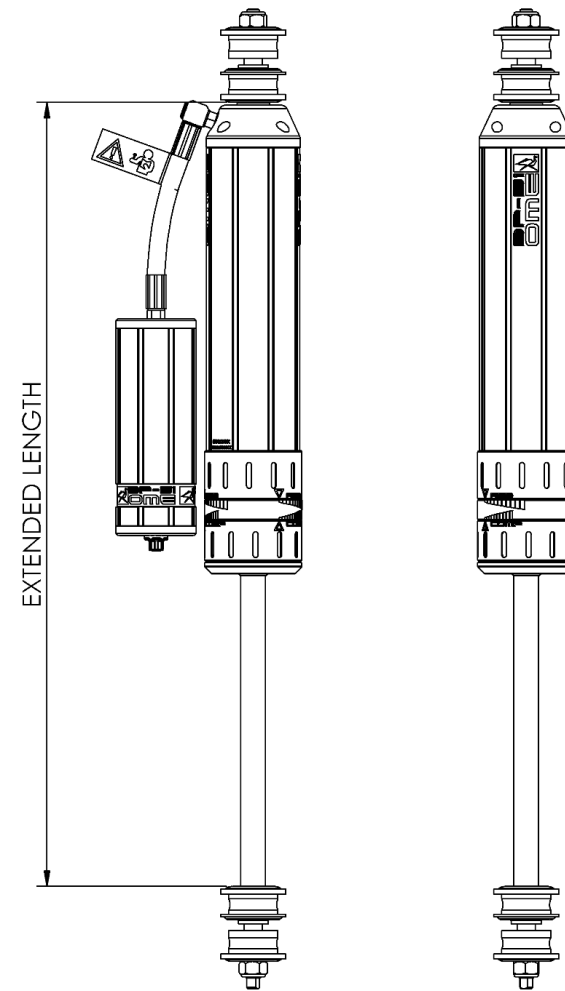
These dampers have been set in the factory to be used for a vehicle with certain load.

If your load or accessory fitment differs, use the table below as a guide for recommended compression and rebound adjuster settings.

Part Number	Front accessories	Compression	Rebound
BP5160012	Bar & Winch	4-8	6-10
	Bar only	2-6	5-9
	No accessories	0-4	4-8
Factory setting		3	6
BP5160043	Bar & Winch	4-8	6-10
	Bar only	2-6	5-9
	No accessories	0-4	4-8
Factory setting		0	4
BP5160014	Bar & Winch	4-8	6-10
	Bar only	2-6	5-9
	No accessories	0-4	4-8
Factory setting		3	6
BP5160044	Bar & Winch	4-8	6-10
	Bar only	2-6	5-9
	No accessories	0-4	4-8
Factory setting		2	6

## SPECIFICATIONS

1	BP5160012 & BP5160043	Extended Length	606 mm
		Compressed Length	364 mm
2	BP5160015 & BP5160044	Extended Length	656 mm
		Compressed Length	389 mm



## SPARE PARTS

Refer to Service And Part manual section:

- For BP5160012 see **BP-51 S&P 3.1-BP5160012**
- For BP5160014 see **BP-51 S&P 3.1-BP5160014**
- For BP5160043 see **BP-51 S&P 3.1-BP5160043**
- For BP5160044 see **BP-51 S&P 3.1-BP5160044**