

ARB AIR LOCKER *Air Operated Locking Differentials*

RD154 Mitsubishi 9.5",31 SPL,Live axle

Specs:

Axle Spline	31 tooth, Ø33.6mm [1.32"]
Ratio Supported	All
Ring Gear ID	144.97mm [5.71"]
Ring Gear OD	241.3mm [9.5"]
Ring Gear Bolts	12 bolts on Ø175mm [6.89"]
Ring Gear Torque	152Nm [112 ft-lb]
Backlash	0.13-0.18mm [0.005-0.007"]
Bearing Cap Torque	78Nm [58 ft-lb]

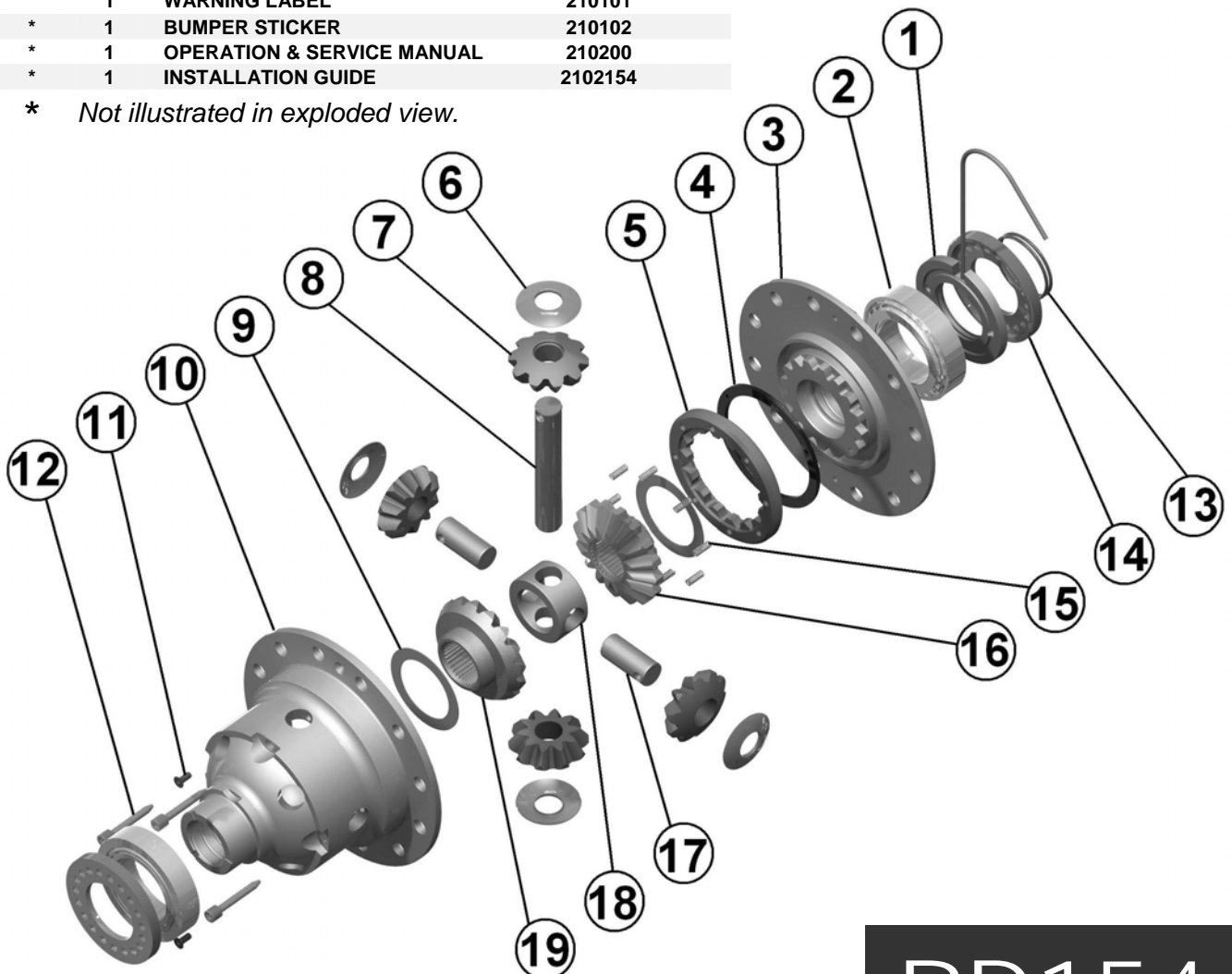
Notes:

- 1 For replacement O-rings use only BS136 Viton 75.
- 2 Available only as complete 6 gear set # 728H211

For 33 spline IRS models, please refer to RD155 ([Section 2.155](#))

ITEM #	QTY	DESCRIPTION	PART #	NOTES
01	1	SEAL HOUSING ASSEMBLY	081813	
02	-	TAPERED ROLLER BEARING	NOT SUPPLIED	
03	1	FLANGE CAP ASSEMBLY	027324	
04	1	BONDED SEAL	160702	
05	1	CLUTCH GEAR	050806	
06	4	PINION THRUST WASHER	151110	
07	4	PINION GEAR	SEE NOTE	2
08	1	LONG CROSS SHAFT	060204	
09	2	SIDE GEAR THRUST WASHER	151010	
10	1	DIFFERENTIAL CASE	013024	
11	2	COUNTERSUNK SCREW	200213	
12	3	RETAINING PIN	120601	
13	2	SEAL HOUSING O-RINGS	160207	1
14	-	ADJUSTER NUT	NOT SUPPLIED	
15	8	RETURN SPRINGS	150113	
16	1	SPLINED SIDE GEAR	SEE NOTE	2
17	2	SHORT CROSS SHAFT	060403	
18	1	SPIDER BLOCK	070201	
19	1	SIDE GEAR	SEE NOTE	2
*	1	BULKHEAD FITTING KIT (O-RING TYPE)	170111	
*	1	PUSH-IN FITTING (5mm to 1/8"BSPP)	170201	
*	1	NIPPLE (1/8" to 1/8" BSPT)	170501	
*	1	AIR LINE (5mm DIA X 6m LONG)	170301	
*	1	SOLENOID VALVE (12V)	180103	
*	1	SWITCH	180209	
*	1	SWITCH COVER (REAR)	180211	
*	10	CABLE TIE	180301	
*	1	WARNING LABEL	210101	
*	1	BUMPER STICKER	210102	
*	1	OPERATION & SERVICE MANUAL	210200	
*	1	INSTALLATION GUIDE	2102154	

* Not illustrated in exploded view.



RD154

