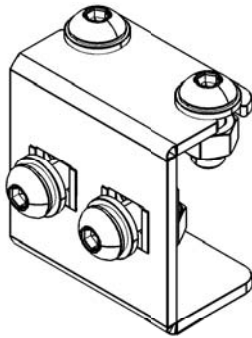




INSTALL TIME: 15 mins



Note: You would have received three Universal Side Mounts with your purchase. For the purpose of this document, only the fitment of one shall be shown as the process is simply repeated for the remaining two Mounts if required.

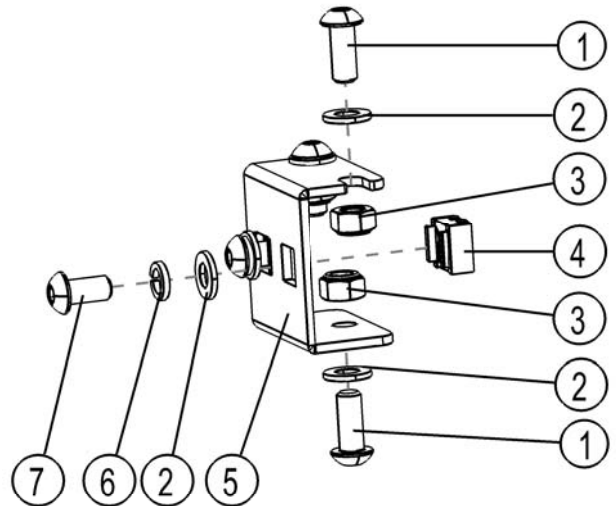
1 GET ORGANIZED

Here is what you are looking at:

Item #	Quantity	Description
1	9	M8x20 BUTTON HEAD BOLT
2	15	M8 FLAT WASHER
3	9	M8 NYLOC NUT
4	6	M8 CAGE NUT
5	3	UNIVERSAL SIDE MOUNT BRACKET
6	6	M8 SPRING WASHER
7	6	M8x16 BUTTON HEAD BOLT

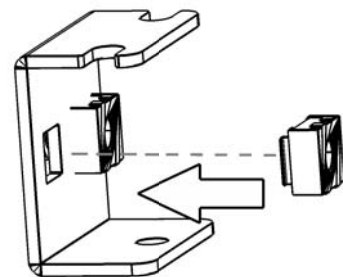
You will need:

- 5mm Hex Key



2 FIT UNIVERSAL SIDE MOUNT

- (A) If not already fitted, insert/clip two M8 Cage Nuts to the Universal Side Mount as shown.



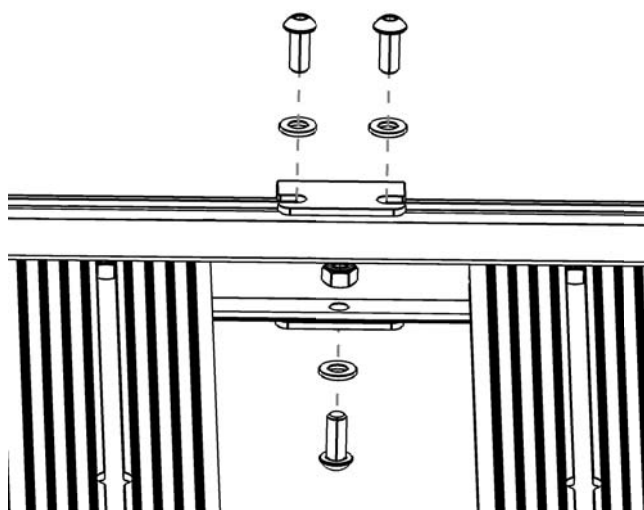
2 FIT UNIVERSAL SIDE MOUNT CONT...

- (B) Decide where on your rack you would like to use your Universal Side Mount.

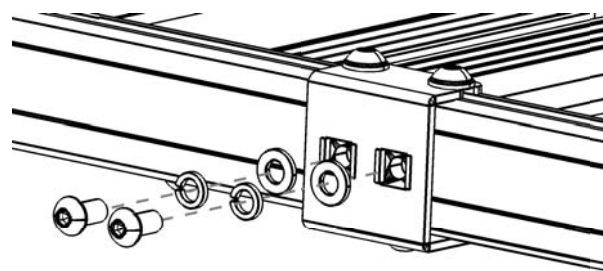
On the chosen side, slide two M8 Nyloc Nuts into the T-slot channel through the corner of the Rack as shown. Ensure that the "dome" of the Nyloc Nut is facing down. The Side Mounts are designed to mount between two slats. Slide the Nyloc Nuts down the T-slot into their approximate positions.



- (C) Slide the Mount over the side of the Rack and fasten as shown below.



- (D) Fasten your accessory to the Universal Side Mount using the M8x16 Button Head Bolts, M8 Flat Washers and M8 Spring Washers supplied.



- (E) Congratulations, you have completed your installation. Take a step back and admire your work. Good Job!

3 INSTALL OTHER VEHICLE AND RACK ACCESSORIES

- (A) Now's the time to visit your favourite Front Runner dealer in person or online.